



Sohag university

Training exam of physiology  
3<sup>rd</sup> year zoology group



Faculty of science  
Zoology department

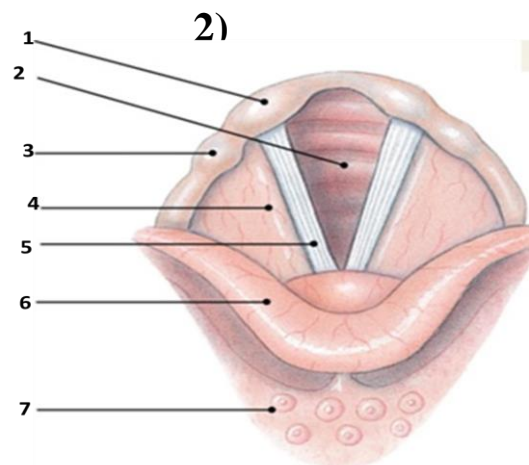
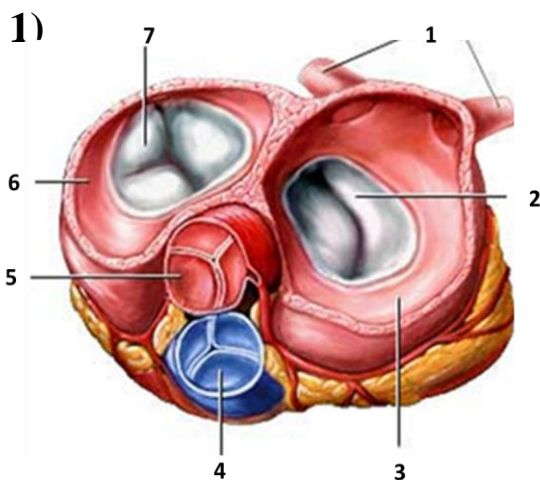
---

**Answer the following questions:**

**1- Complete the missing parts:**

- 1- The ..... is a series of hollow organs joined in a long, twisting tube from the mouth to .....
- 2- ..... produce antibodies to further protect the small intestine from infection.
- 3- ..... include receptors for taste, smell, vision, hearing, and equilibrium.
- 4- ..... is the wall that divides heart into right and left halves.
- 5- ..... they protect body against infections or disease.
- 6- The ..... drains the upper left portion of the body into the left subclavian vein.
- 7- The blood supply of heart comes from the ..... arteries.
- 8- ..... is an important component of bile salts and in formation of vitamin D, plasma membrane and steroid hormones.

**2-Identify the following draw with write the labels :**



---

*My best wishes..... Dr. Doaa Abbass*